

Wallace Dr between Willis Point Rd and West Saanich Rd
February 25, 2020 To February 27, 2020



The data presented here is for information purposes only and should not be considered authoritative for construction, geotechnical, engineering, navigational, legal, or other site-specific uses. The information shared is owned by the Transportation Division of the Engineering Department at the District of Saanich. Accuracy is not guaranteed.

Start Date: 24-Feb-20
 Start Time: 0:05
 Station ID: M0039-01

Location 1: Wallace Dr between Willis Point Rd and West Saanich Rd

Note: Higher than typical afternoon volumes on Feb. 26.

DATE:	February 24, 2020		February 25, 2020		February 26, 2020		February 27, 2020		February 28, 2020		WK AVG		WK AVG	HOURLY
	MON		TUE		WED		THURS		FRI				CH 1+2	%
Time:	NB	SB	NB	SB	NB	SB	NB	SB	NB	SB	NB	SB		
12-1 AM			5	1	9	3	10	6			8	3	11	0.3%
1-2 AM			4	1	3	0	2	0			3	0	3	0.1%
2-3 AM			1	6	5	3	0	1			2	3	5	0.1%
3-4 AM			2	2	0	4	3	5			2	4	5	0.1%
4-5 AM			1	4	4	6	1	5			2	5	7	0.2%
5-6 AM			17	23	12	21	12	15			14	20	33	0.8%
6-7 AM			130	86	122	82	118	87			123	85	208	5.2%
7-8 AM			83	244	83	260	76	254			81	253	333	8.3%
8-9 AM			84	241	87	236	79	204			83	227	310	7.7%
9-10 AM			80	134	92	129	86	134			86	132	218	5.4%
10-11 AM			78	103	95	112	85	145			86	120	206	5.1%
11-12 PM			109	122	133	141	96	133			113	132	245	6.1%
12-1 PM			89	108	116	128	104	147			103	128	231	5.8%
1-2 PM			126	121	148	133	112	111			129	122	250	6.2%
2-3 PM			115	132	163	152	130	110			136	131	267	6.7%
3-4 PM			158	185	311	219	179	141			216	182	398	9.9%
4-5 PM			220	111	313	184	231	151			255	149	403	10.1%
5-6 PM			192	140	246	198	198	155			212	164	376	9.4%
6-7 PM			108	82	101	75	117	68			109	75	184	4.6%
7-8 PM			65	25	67	43	74	33			69	34	102	2.6%
8-9 PM			58	18	45	28	52	29			52	25	77	1.9%
9-10 PM			42	22	40	22	60	16			47	20	67	1.7%
10-11 PM			38	8	41	15	26	14			35	12	47	1.2%
11-12 AM			8	6	13	3	16	4			12	4	17	0.4%
LANES			1813	1925	2249	2197	1867	1968			1976	2030	4006	100.0%
TOTAL			3738		4446		3835				4010			
	MON		TUE		WED		THURS		FRI		WK AVG			

PEAK HOUR					TOTAL VEHICALS-PEAK PERIODS		2 HOUR PEAK INTERVALS						
MAX. 7 - 9 am PEAK HOUR	333	⇒	8.3%	between 7-8 AM	1899	⇒ 6 HR TOTAL	2 HR AM (7 - 9 AM)						
MAX. 7 - 11 am PEAK HOUR	333	⇒	8.3%	between 7-8 AM	1423	⇒ 4 HR TOTAL	VEH / HR	VEH / 2HR	2 HR %				
MAX. 11 am - 1 pm PEAK HOUR	245	⇒	6.1%	between 11-12 PM			7-8 AM	333	644	16.1%			
MAX. 11 am - 3 pm PEAK HOUR	267	⇒	6.7%	between 2-3 PM			8-9 AM	310					
MAX. 4 - 6 pm PEAK HOUR	403	⇒	10.1%	between 4-5 PM			2 HR NOON (11 - 1 PM)						
MAX. 3 - 6 pm PEAK HOUR	403	⇒	10.1%	between 4-5 PM			VEH / HR	VEH / 2HR	2 HR %				
							11-12 PM	245	475	11.9%			
							12-1 PM	231					
							2 HR PM (4 - 6 PM)						
							VEH / HR	VEH / 2HR	2 HR %				
							4-5 PM	403	780	19.5%			
							5-6 PM	376					

Wallace Dr between Willis Point Rd and West Saanich Rd

Northbound

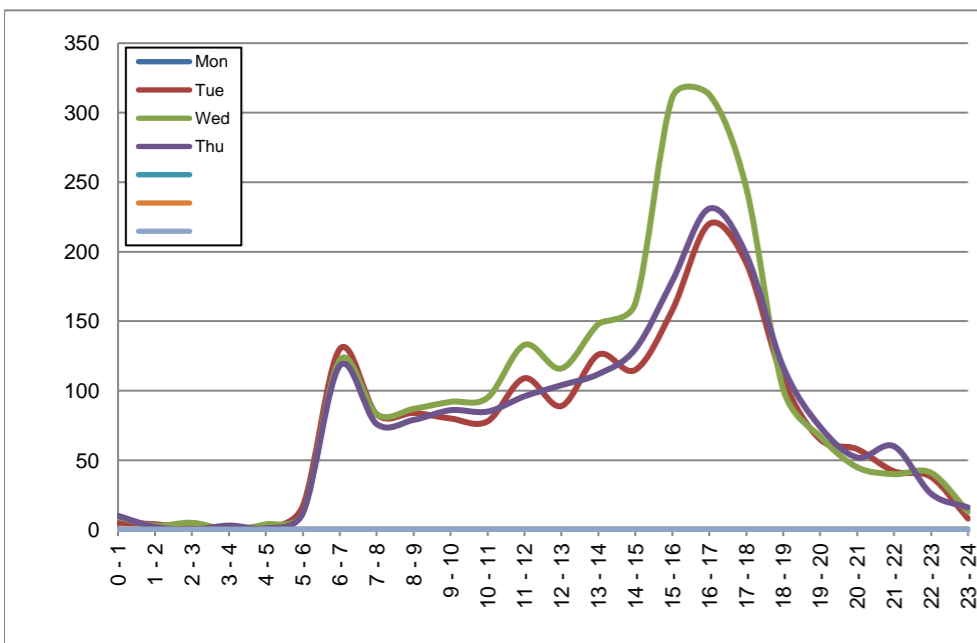
February 24, 2020 to February 27, 2020

Hourly Volumes

Time Period	Mon	Tue	Wed	Thu			
	Feb 24	Feb 25	Feb 26	Feb 27			
0 - 1		5	9	10			
1 - 2		4	3	2			
2 - 3		1	5	0			
3 - 4		2	0	3			
4 - 5		1	4	1			
5 - 6		17	12	12			
6 - 7		130	122	118			
7 - 8		83	83	76			
8 - 9		84	87	79			
9 - 10		80	92	86			
10 - 11		78	95	85			
11 - 12		109	133	96			
12 - 13		89	116	104			
13 - 14		126	148	112			
14 - 15		115	163	130			
15 - 16		158	311	179			
16 - 17		220	313	231			
17 - 18		192	246	198			
18 - 19		108	101	117			
19 - 20		65	67	74			
20 - 21		58	45	52			
21 - 22		42	40	60			
22 - 23		38	41	26			
23 - 24		8	13	16			
Day Total		1813	2249	1867			

15-Minute Volumes

Time Start	Mon	Tue	Wed	Thu				Time Start	Mon	Tue	Wed	Thu			
	Feb 24	Feb 25	Feb 26	Feb 27					Feb 24	Feb 25	Feb 26	Feb 27			
0:00		2	2	4				12:00		23	24	26			
0:15		0	2	2				12:15		20	39	27			
0:30		3	3	3				12:30		22	21	25			
0:45		0	2	1				12:45		24	32	26			
1:00		2	0	1				13:00		38	38	26			
1:15		1	2	1				13:15		31	33	30			
1:30		0	1	0				13:30		24	37	26			
1:45		1	0	0				13:45		33	40	30			
2:00		0	1	0				14:00		32	45	26			
2:15		0	2	0				14:15		27	39	32			
2:30		0	0	0				14:30		21	34	33			
2:45		1	2	0				14:45		35	45	39			
3:00		0	0	0				15:00		37	66	37			
3:15		2	0	2				15:15		35	79	39			
3:30		0	0	0				15:30		50	70	52			
3:45		0	0	1				15:45		36	96	51			
4:00		0	0	0				16:00		53	99	43			
4:15		1	0	0				16:15		61	64	55			
4:30		0	0	1				16:30		48	74	58			
4:45		0	4	0				16:45		58	76	75			
5:00		1	0	0				17:00		57	83	59			
5:15		3	2	3				17:15		53	73	52			
5:30		2	2	2				17:30		48	47	45			
5:45		11	8	7				17:45		34	43	42			
6:00		17	15	12				18:00		31	27	35			
6:15		26	21	30				18:15		33	28	32			
6:30		48	54	44				18:30		18	26	25			
6:45		39	32	32				18:45		26	20	25			
7:00		14	15	19				19:00		27	18	15			
7:15		24	24	13				19:15		18	16	23			
7:30		22	24	21				19:30		9	18	17			
7:45		23	20	23				19:45		11	15	19			
8:00		26	27	17				20:00		19	7	21			
8:15		25	29	26				20:15		8	12	11			
8:30		14	19	19				20:30		19	12	10			
8:45		19	12	17				20:45		12	14	10			
9:00		24	14	29				21:00		11	12	12			
9:15		18	27	23				21:15		9	14	15			
9:30		16	32	15				21:30		15	13	20			
9:45		22	19	19				21:45		7	1	13			
10:00		17	28	25				22:00		10	13	5			
10:15		19	22	19				22:15		16	15	10			
10:30		23	25	25				22:30		9	9	9			
10:45		19	20	16				22:45		3	4	2			
11:00		14	33	16				23:00		3	2	3			
11:15		40	40	28				23:15		3	2	5			
11:30		25	32	20				23:30		1	5	4			
11:45		30	28	32				23:45		1	4	4			



Site notes:

Wallace Dr between Willis Point Rd and West Saanich Rd

Southbound

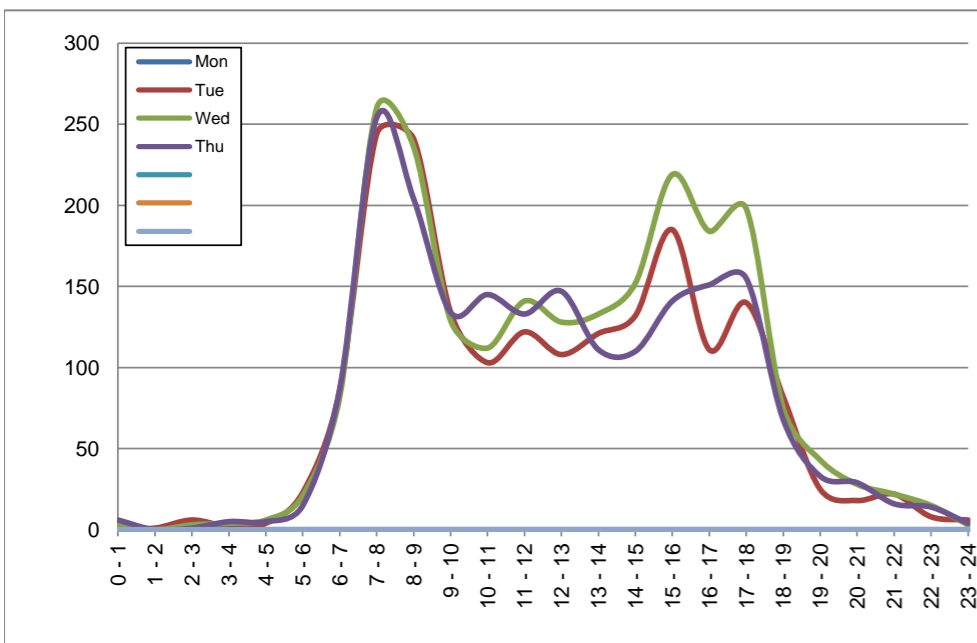
February 24, 2020 to February 27, 2020

Hourly Volumes

Time Period	Mon	Tue	Wed	Thu			
	Feb 24	Feb 25	Feb 26	Feb 27			
0 - 1		1	3	6			
1 - 2		1	0	0			
2 - 3		6	3	1			
3 - 4		2	4	5			
4 - 5		4	6	5			
5 - 6		23	21	15			
6 - 7		86	82	87			
7 - 8		244	260	254			
8 - 9		241	236	204			
9 - 10		134	129	134			
10 - 11		103	112	145			
11 - 12		122	141	133			
12 - 13		108	128	147			
13 - 14		121	133	111			
14 - 15		132	152	110			
15 - 16		185	219	141			
16 - 17		111	184	151			
17 - 18		140	198	155			
18 - 19		82	75	68			
19 - 20		25	43	33			
20 - 21		18	28	29			
21 - 22		22	22	16			
22 - 23		8	15	14			
23 - 24		6	3	4			
Day Total		1925	2197	1968			

15-Minute Volumes

Time Start	Mon	Tue	Wed	Thu				Time Start	Mon	Tue	Wed	Thu			
	Feb 24	Feb 25	Feb 26	Feb 27					Feb 24	Feb 25	Feb 26	Feb 27			
0:00		0	0	2				12:00		23	24	29			
0:15		1	0	1				12:15		24	31	42			
0:30		0	0	1				12:30		37	44	38			
0:45		0	3	2				12:45		24	29	38			
1:00		0	0	0				13:00		28	30	33			
1:15		1	0	0				13:15		40	29	23			
1:30		0	0	0				13:30		29	32	22			
1:45		0	0	0				13:45		24	42	33			
2:00		1	0	0				14:00		31	38	26			
2:15		2	1	0				14:15		32	29	27			
2:30		2	2	1				14:30		39	32	23			
2:45		1	0	0				14:45		30	53	34			
3:00		0	0	0				15:00		35	49	29			
3:15		1	2	2				15:15		33	47	28			
3:30		1	1	2				15:30		72	70	52			
3:45		0	1	1				15:45		45	53	32			
4:00		0	3	0				16:00		36	49	44			
4:15		1	1	1				16:15		22	40	24			
4:30		1	1	2				16:30		28	48	41			
4:45		2	1	2				16:45		25	47	42			
5:00		4	4	2				17:00		34	54	42			
5:15		3	3	0				17:15		31	50	26			
5:30		6	7	8				17:30		37	49	53			
5:45		10	7	5				17:45		38	45	34			
6:00		15	14	14				18:00		23	26	18			
6:15		12	10	16				18:15		27	18	22			
6:30		23	20	20				18:30		18	17	15			
6:45		36	38	37				18:45		14	14	13			
7:00		46	56	40				19:00		10	13	9			
7:15		47	54	54				19:15		8	10	12			
7:30		81	81	73				19:30		2	10	5			
7:45		70	69	87				19:45		5	10	7			
8:00		66	64	61				20:00		4	5	10			
8:15		54	55	46				20:15		5	11	6			
8:30		71	73	61				20:30		6	8	5			
8:45		50	44	36				20:45		3	4	8			
9:00		39	36	41				21:00		5	6	4			
9:15		25	34	31				21:15		5	6	4			
9:30		31	32	28				21:30		4	9	5			
9:45		39	27	34				21:45		8	1	3			
10:00		32	40	34				22:00		1	5	6			
10:15		20	23	37				22:15		3	5	4			
10:30		25	30	36				22:30		3	5	3			
10:45		26	19	38				22:45		1	0	1			
11:00		36	42	32				23:00		2	0	0			
11:15		39	37	28				23:15		3	3	2			
11:30		20	35	36				23:30		1	0	2			
11:45		27	27	37				23:45		0	0	0			



Site notes:

Vehicle Speed Summary

Saanich Engineering Department

Count Id: **M0039-01**

Filename: [Wallace Dr between Willis Point Rd and West Saanich Rd-Feb-2020.xlsm](#)

Location: Wallace Dr between Willis Point Rd and West Saanich Rd

Note: Higher than typical afternoon volumes on Feb. 26.

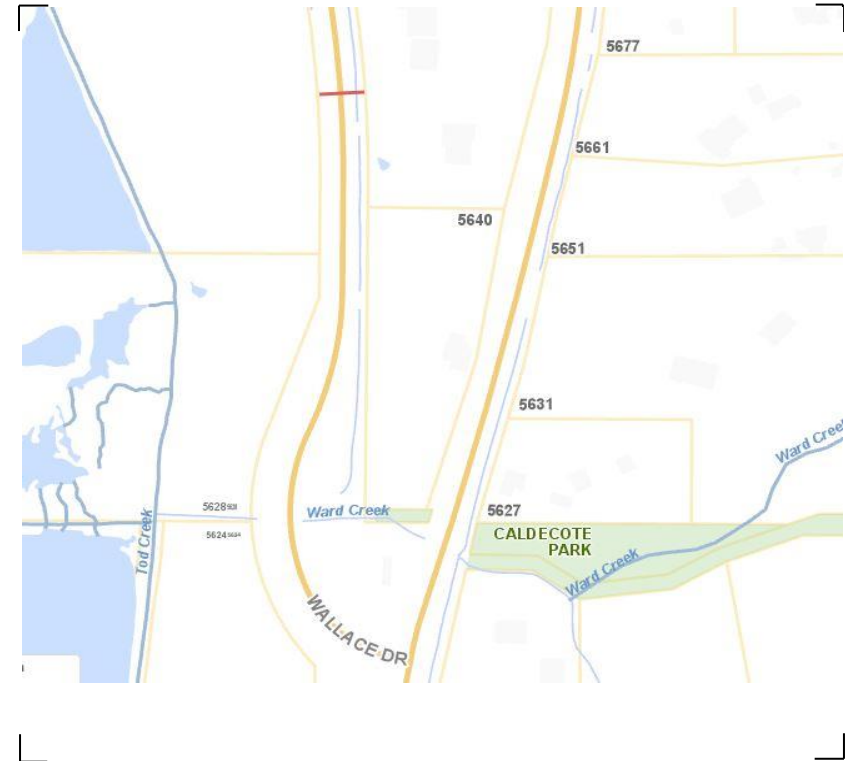
Direction: **North-South**

Dates: **February 25, 2020 To February 27, 2020**

Filtered data

AVG. SPEED	37 mph	59 km/h
50 % SPEED	37 mph	59 km/h
85 % SPEED	41 mph	67 km/h
95 % SPEED	45 mph	72 km/h

Location Map



Wallace Dr between Willis Point Rd and West Saanich Rd

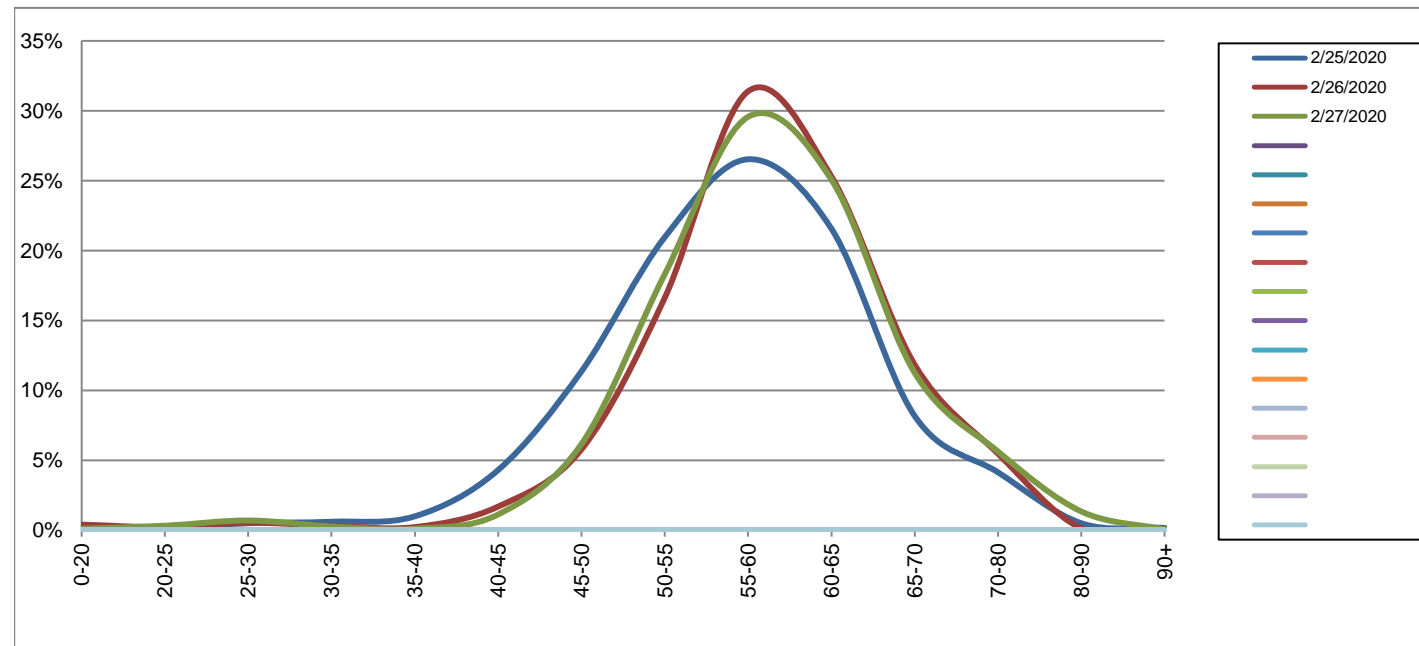
Northbound

February 25, 2020 to February 27, 2020

Daily Speed Bin Percentages														Daily Speed Bin Volumes														Total	Avg.	
Bin #	1	2	3	4	5	6	7	8	9	10	11	12	13	14	1	2	3	4	5	6	7	8	9	10	11	12	13	14		
Bin Speeds	0-20	20-25	25-30	30-35	35-40	40-45	45-50	50-55	55-60	60-65	65-70	70-80	80-90	90+	0-20	20-25	25-30	30-35	35-40	40-45	45-50	50-55	55-60	60-65	65-70	70-80	80-90	90+	Volume	Speed
2/25/2020	0.1%	0.2%	0.5%	0.6%	1.0%	4.3%	11.4%	21.0%	26.5%	21.6%	8.2%	4.1%	0.5%	0.2%	1	3	9	11	18	78	206	380	481	391	148	75	9	3	1813	57
2/26/2020	0.4%	0.2%	0.5%	0.3%	0.2%	1.7%	5.8%	16.6%	31.4%	25.3%	11.8%	5.5%	0.1%	0.1%	9	5	12	7	5	38	130	374	706	569	266	123	3	2	2249	59
2/27/2020	0.1%	0.3%	0.7%	0.3%	0.1%	1.1%	6.2%	18.3%	29.6%	25.1%	11.2%	5.6%	1.3%	0.1%	2	6	13	5	2	21	115	342	552	468	210	105	25	1	1867	59
Total	0.2%	0.2%	0.6%	0.4%	0.4%	2.3%	7.6%	18.5%	29.3%	24.1%	10.5%	5.1%	0.6%	0.1%	12	14	34	23	25	137	451	1096	1739	1428	624	303	37	6	5929	58

Speed Data Summary

Bin #	1	2	3	4	5	6	7	8	9	10	11	12	13	14	Total
Bin Speeds	0-20	20-25	25-30	30-35	35-40	40-45	45-50	50-55	55-60	60-65	65-70	70-80	80-90	90+	
Survey Total	12	14	34	23	25	137	451	1096	1739	1428	624	303	37	6	5929
% Total	0.2%	0.2%	0.6%	0.4%	0.4%	2.3%	7.6%	18.5%	29.3%	24.1%	10.5%	5.1%	0.6%	0.1%	100%
Accumulated %	0.2%	0.4%	1.0%	1.4%	1.8%	4.1%	11.7%	30.2%	59.6%	83.6%	94.2%	99.3%	99.9%	100%	
Inverse Accum. %	99.8%	99.6%	99.0%	98.6%	98.2%	95.9%	88.3%	69.8%	40.4%	16.4%	5.8%	0.7%	0.1%	0.0%	
Average Speed	58 KM/H														



Site notes:

Wallace Dr between Willis Point Rd and West Saanich Rd

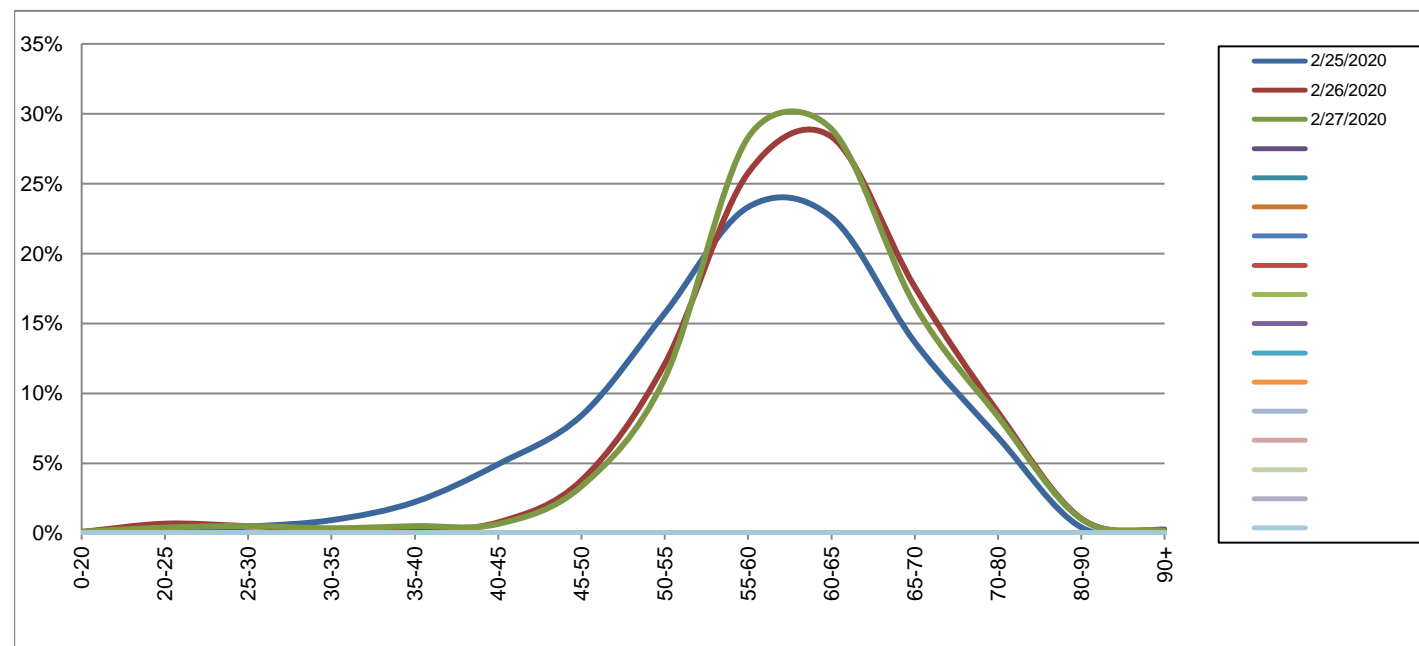
Southbound

February 25, 2020 to February 27, 2020

Daily Speed Bin Percentages														Daily Speed Bin Volumes														Total	Avg.	
Bin #	1	2	3	4	5	6	7	8	9	10	11	12	13	14	1	2	3	4	5	6	7	8	9	10	11	12	13	14	Volume	Speed
Bin Speeds	0-20	20-25	25-30	30-35	35-40	40-45	45-50	50-55	55-60	60-65	65-70	70-80	80-90	90+	0-20	20-25	25-30	30-35	35-40	40-45	45-50	50-55	55-60	60-65	65-70	70-80	80-90	90+		
2/25/2020	0.0%	0.2%	0.5%	0.9%	2.2%	4.9%	8.4%	15.7%	23.3%	22.6%	13.7%	6.9%	0.4%	0.3%	0	3	9	18	43	95	162	303	449	435	263	132	8	5	1925	58
2/26/2020	0.1%	0.7%	0.5%	0.3%	0.2%	0.8%	3.8%	12.1%	25.8%	28.4%	17.6%	8.6%	1.0%	0.1%	2	15	11	6	5	17	83	266	566	623	387	190	23	3	2197	61
2/27/2020	0.1%	0.4%	0.5%	0.4%	0.5%	0.7%	3.4%	11.1%	28.3%	28.9%	16.3%	8.3%	1.0%	0.2%	2	8	10	7	10	13	66	218	557	569	321	164	20	3	1968	61
Total	0.1%	0.4%	0.5%	0.5%	1.0%	2.1%	5.1%	12.9%	25.8%	26.7%	15.9%	8.0%	0.8%	0.2%	4	26	30	31	58	125	311	787	1572	1627	971	486	51	11	6090	60

Speed Data Summary

Bin #	1	2	3	4	5	6	7	8	9	10	11	12	13	14	Total
Bin Speeds	0-20	20-25	25-30	30-35	35-40	40-45	45-50	50-55	55-60	60-65	65-70	70-80	80-90	90+	
Survey Total	4	26	30	31	58	125	311	787	1572	1627	971	486	51	11	6090
% Total	0.1%	0.4%	0.5%	0.5%	1.0%	2.1%	5.1%	12.9%	25.8%	26.7%	15.9%	8.0%	0.8%	0.2%	100%
Accumulated %	0.1%	0.5%	1.0%	1.5%	2.4%	4.5%	9.6%	22.5%	48.3%	75.1%	91.0%	99.0%	99.8%	100%	
Inverse Accum. %	99.9%	99.5%	99.0%	98.5%	97.6%	95.5%	90.4%	77.5%	51.7%	24.9%	9.0%	1.0%	0.2%	0.0%	
Average Speed	60 KM/H														



Site notes:

Wallace Dr between Willis Point Rd and West Saanich Rd

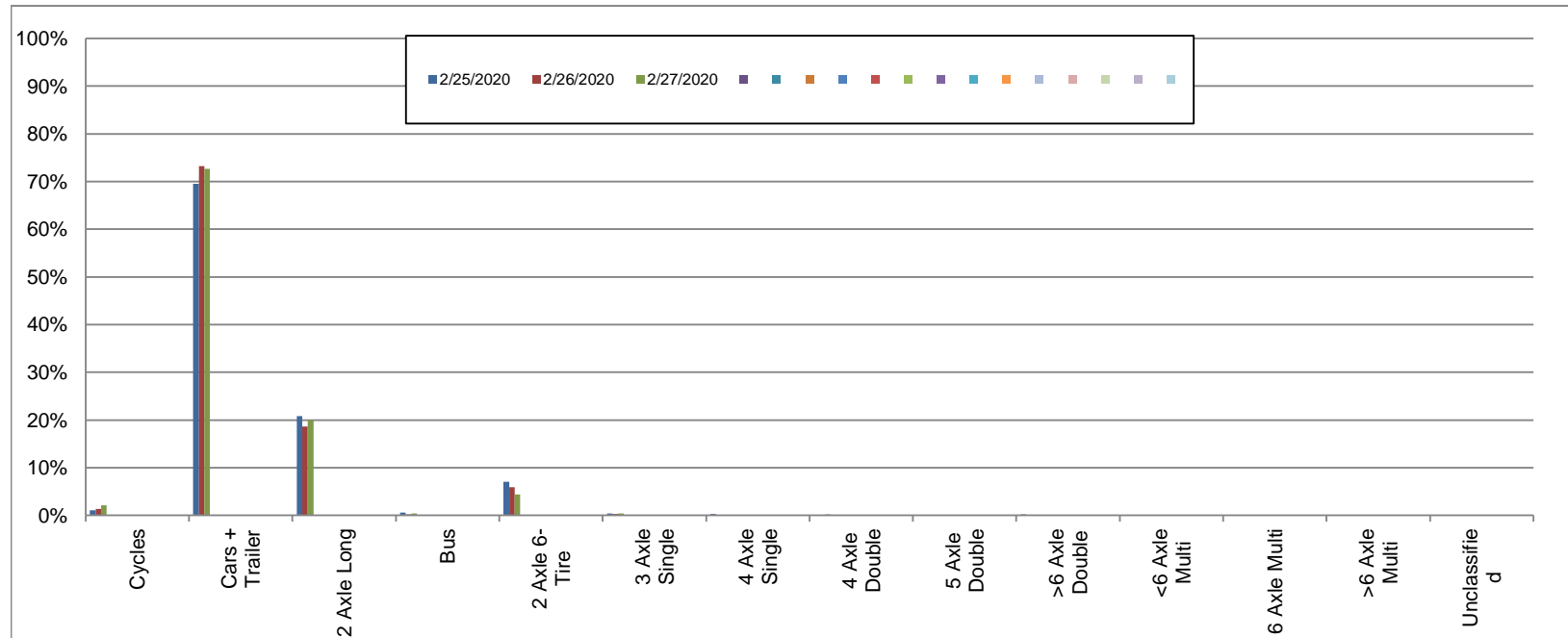
Northbound

February 25, 2020 to February 27, 2020

Daily Class Bin Percentages															Daily Class Bin Volumes											Total Volume			
Bin #	1	2	3	4	5	6	7	8	9	10	11	12	13	14	1	2	3	4	5	6	7	8	9	10	11		12	13	14
Bin Class	Cycles	Cars + Trailer	2 Axle Long	Bus	2 Axle 6-Tire	3 Axle Single	4 Axle Single	4 Axle Double	5 Axle Double	>6 Axle Double	<6 Axle Multi	6 Axle Multi	>6 Axle Multi	Unclassified	Cycles	Cars + Trailer	2 Axle Long	Bus	2 Axle 6-Tire	3 Axle Single	4 Axle Single	4 Axle Double	5 Axle Double	>6 Axle Double	<6 Axle Multi	6 Axle Multi	>6 Axle Multi	Unclassified	
2/25/2020	1.0%	69.6%	20.8%	0.6%	7.1%	0.4%	0.3%	0.1%	0.0%	0.2%	0.0%	0.0%	0.0%	0.0%	19	1261	377	11	128	8	5	1	0	3	0	0	0	0	1813
2/26/2020	1.4%	73.2%	18.6%	0.2%	5.9%	0.3%	0.1%	0.0%	0.1%	0.1%	0.0%	0.0%	0.0%	0.1%	31	1647	418	4	133	6	2	0	3	3	0	0	0	2	2249
2/27/2020	2.1%	72.6%	19.9%	0.4%	4.3%	0.4%	0.1%	0.2%	0.0%	0.0%	0.0%	0.0%	0.0%	0.1%	39	1356	372	7	81	7	1	3	0	0	0	0	0	1	1867
Total	1.5%	71.9%	19.7%	0.4%	5.8%	0.4%	0.1%	0.1%	0.1%	0.1%	0.0%	0.0%	0.0%	0.1%	89	4264	1167	22	342	21	8	4	3	6	0	0	0	3	5929

Class Data Summary

Bin #	1	2	3	4	5	6	7	8	9	10	11	12	13	14	Total Volume
Bin Class	Cycles	Cars + Trailer	2 Axle Long	Bus	2 Axle 6-Tire	3 Axle Single	4 Axle Single	4 Axle Double	5 Axle Double	>6 Axle Double	<6 Axle Multi	6 Axle Multi	>6 Axle Multi	Unclassified	Total Volume
Survey Total	89	4264	1167	22	342	21	8	4	3	6	0	0	0	3	5929
% Total	1.5%	71.9%	19.7%	0.4%	5.8%	0.4%	0.1%	0.1%	0.1%	0.1%	0.0%	0.0%	0.0%	0.1%	100%
Accumulated %	1.5%	73.4%	93.1%	93.5%	99.2%	99.6%	99.7%	99.8%	99.8%	99.9%	99.9%	99.9%	99.9%	100.0%	
Inv. Accum. %	98.5%	26.6%	6.9%	6.5%	0.8%	0.4%	0.3%	0.2%	0.2%	0.1%	0.1%	0.1%	0.0%		



Classification Descriptions

Bin #	Bin Description
1	Motorcycles
2	Passenger cars, including those with recreational trailers
3	2-axle pick-ups, vans, and RVs, including those with recreational trailers
4	Buses
5	2-axle, 6-tire single units
6	3-axle single units
7	4-axle single units
8	3-axle or 4-axle double unit
9	5-axle double unit
10	6-, 7-, or 8-axle double unit
11	5-axle multiple unit
12	6-axle multiple unit
13	7-or-more-axle multiple unit
14	Vehicles that could not be classified

Site notes:

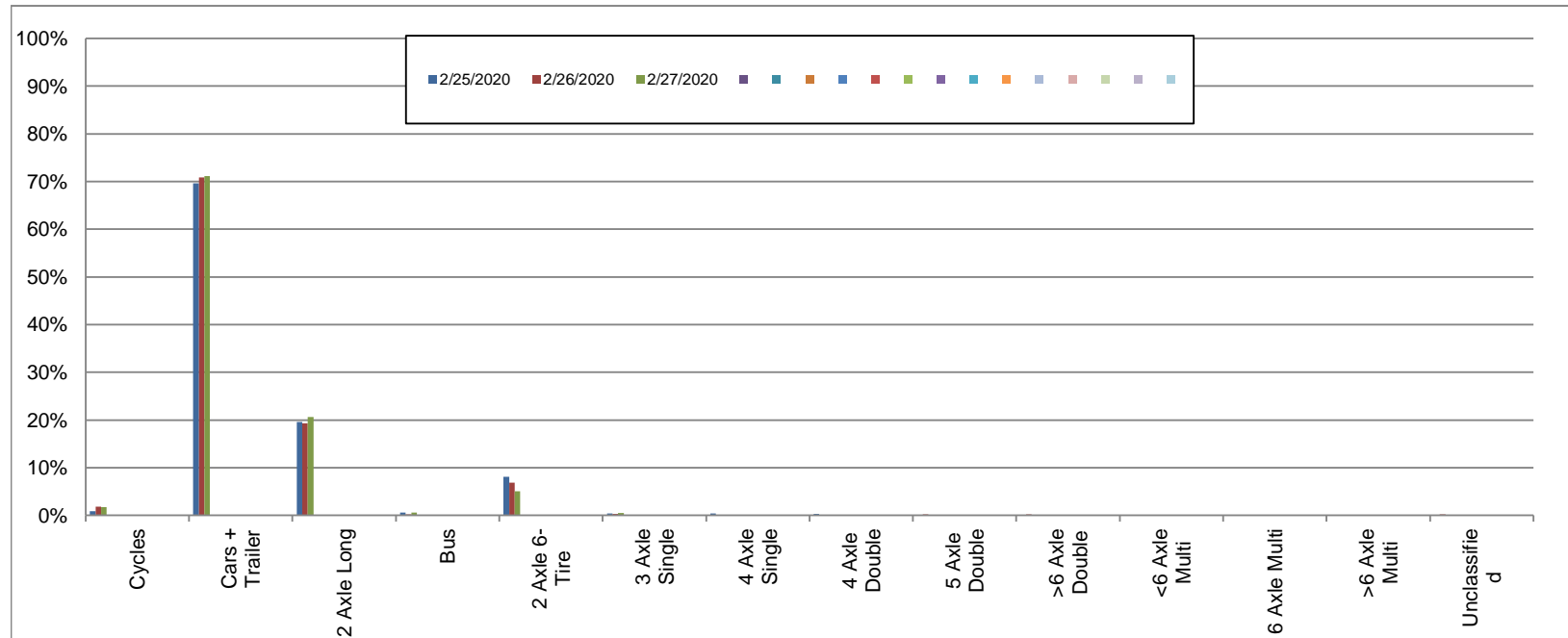
Wallace Dr between Willis Point Rd and West Saanich Rd

Southbound
February 25, 2020 to February 27, 2020

Daily Class Bin Percentages															Daily Class Bin Volumes														
Bin #	1	2	3	4	5	6	7	8	9	10	11	12	13	14	1	2	3	4	5	6	7	8	9	10	11	12	13	14	Total Volume
Bin Class	Cycles	Cars + Trailer	2 Axle Long	Bus	2 Axle 6-Tire	3 Axle Single	4 Axle Single	4 Axle Double	5 Axle Double	>6 Axle Double	<6 Axle Multi	6 Axle Multi	>6 Axle Multi	Unclassified	Cycles	Cars + Trailer	2 Axle Long	Bus	2 Axle 6-Tire	3 Axle Single	4 Axle Single	4 Axle Double	5 Axle Double	>6 Axle Double	<6 Axle Multi	6 Axle Multi	>6 Axle Multi	Unclassified	
2/25/2020	0.8%	69.7%	19.6%	0.6%	8.1%	0.4%	0.4%	0.3%	0.1%	0.1%	0.0%	0.0%	0.0%	0.1%	16	1341	377	11	155	8	7	5	1	2	0	0	0	2	1925
2/26/2020	1.9%	70.8%	19.3%	0.2%	6.8%	0.3%	0.1%	0.0%	0.2%	0.2%	0.0%	0.0%	0.0%	0.2%	41	1556	423	5	150	6	3	1	4	4	0	0	0	4	2197
2/27/2020	1.7%	71.2%	20.6%	0.6%	5.1%	0.5%	0.1%	0.2%	0.0%	0.0%	0.0%	0.0%	0.0%	0.1%	34	1401	406	11	100	9	2	3	0	0	0	0	0	2	1968
Total	1.5%	70.6%	19.8%	0.4%	6.7%	0.4%	0.2%	0.1%	0.1%	0.1%	0.0%	0.0%	0.0%	0.1%	91	4298	1206	27	405	23	12	9	5	6	0	0	0	8	6090

Class Data Summary

Bin #	1	2	3	4	5	6	7	8	9	10	11	12	13	14	Total Volume
Bin Class	Cycles	Cars + Trailer	2 Axle Long	Bus	2 Axle 6-Tire	3 Axle Single	4 Axle Single	4 Axle Double	5 Axle Double	>6 Axle Double	<6 Axle Multi	6 Axle Multi	>6 Axle Multi	Unclassified	Total Volume
Survey Total	91	4298	1206	27	405	23	12	9	5	6	0	0	0	8	6090
% Total	1.5%	70.6%	19.8%	0.4%	6.7%	0.4%	0.2%	0.1%	0.1%	0.1%	0.0%	0.0%	0.0%	0.1%	100%
Accumulated %	1.5%	72.1%	91.9%	92.3%	99.0%	99.3%	99.5%	99.7%	99.8%	99.9%	99.9%	99.9%	99.9%	100.0%	
Inv. Accum. %	98.5%	27.9%	8.1%	7.7%	1.0%	0.7%	0.5%	0.3%	0.2%	0.1%	0.1%	0.1%	0.0%		



Classification Descriptions

Bin #	Bin Description
1	Motorcycles
2	Passenger cars, including those with recreational trailers
3	2-axle pick-ups, vans, and RVs, including those with recreational trailers
4	Buses
5	2-axle, 6-tire single units
6	3-axle single units
7	4-axle single units
8	3-axle or 4-axle double unit
9	5-axle double unit
10	6-, 7-, or 8-axle double unit
11	5-axle multiple unit
12	6-axle multiple unit
13	7-or-more-axle multiple unit
14	Vehicles that could not be classified

Site notes: